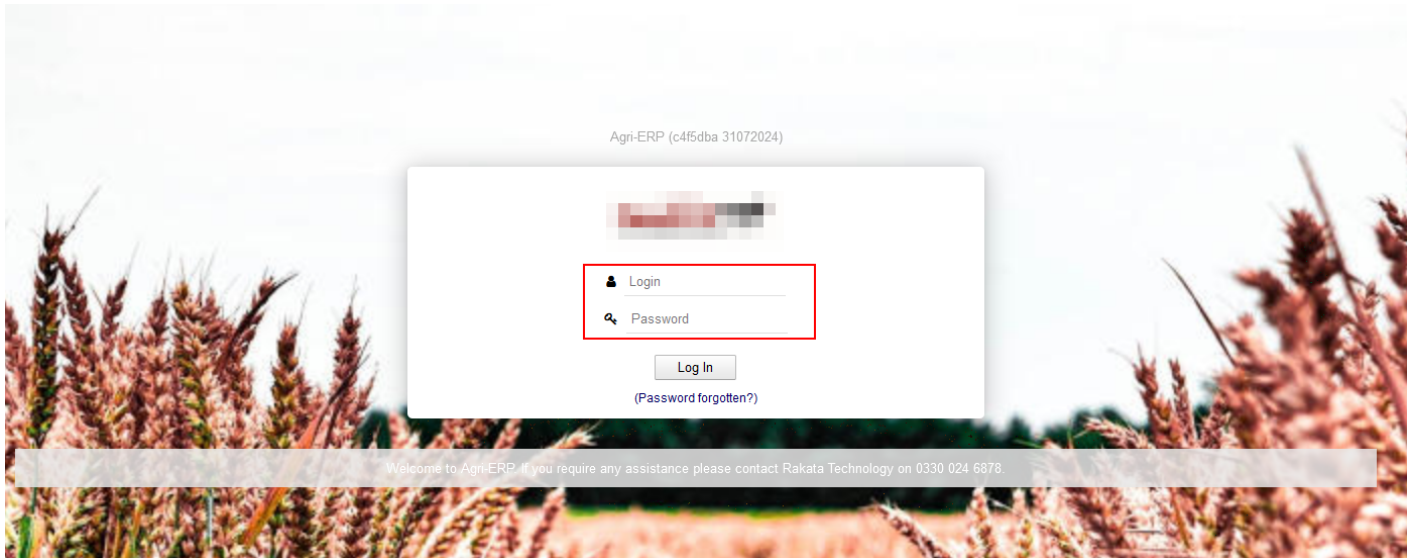
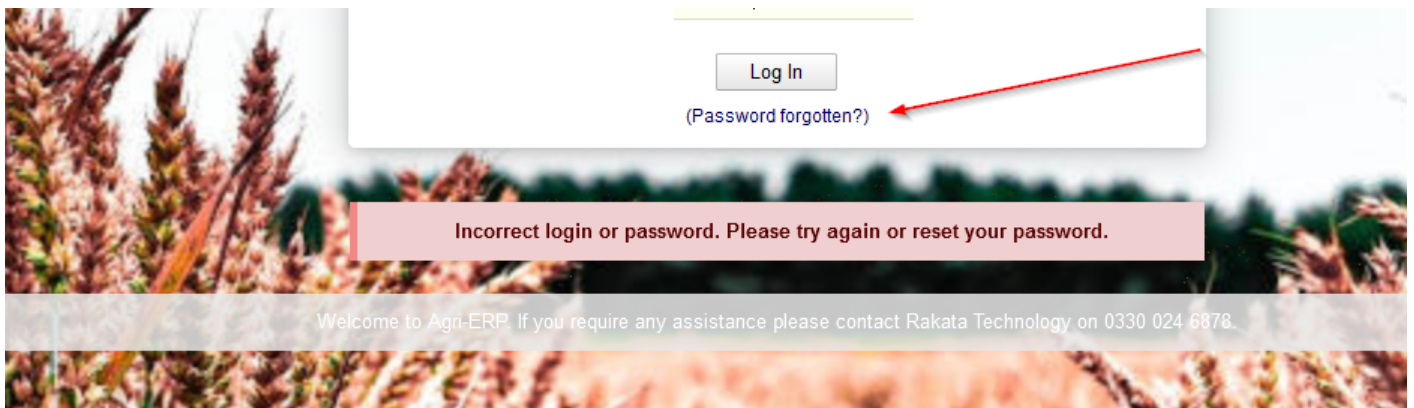


Logging In / Password Reset

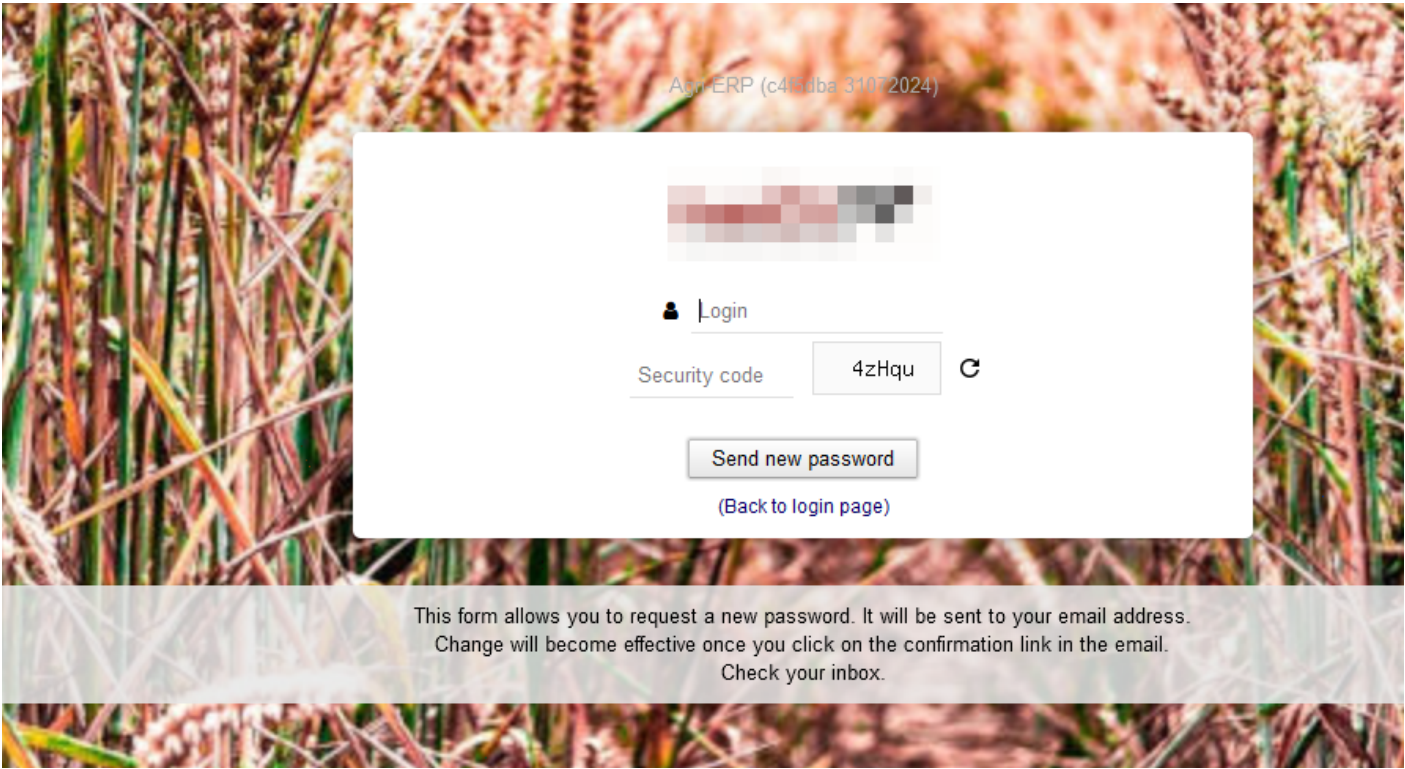
Enter the username and password provided to you by your administrator and press Log In



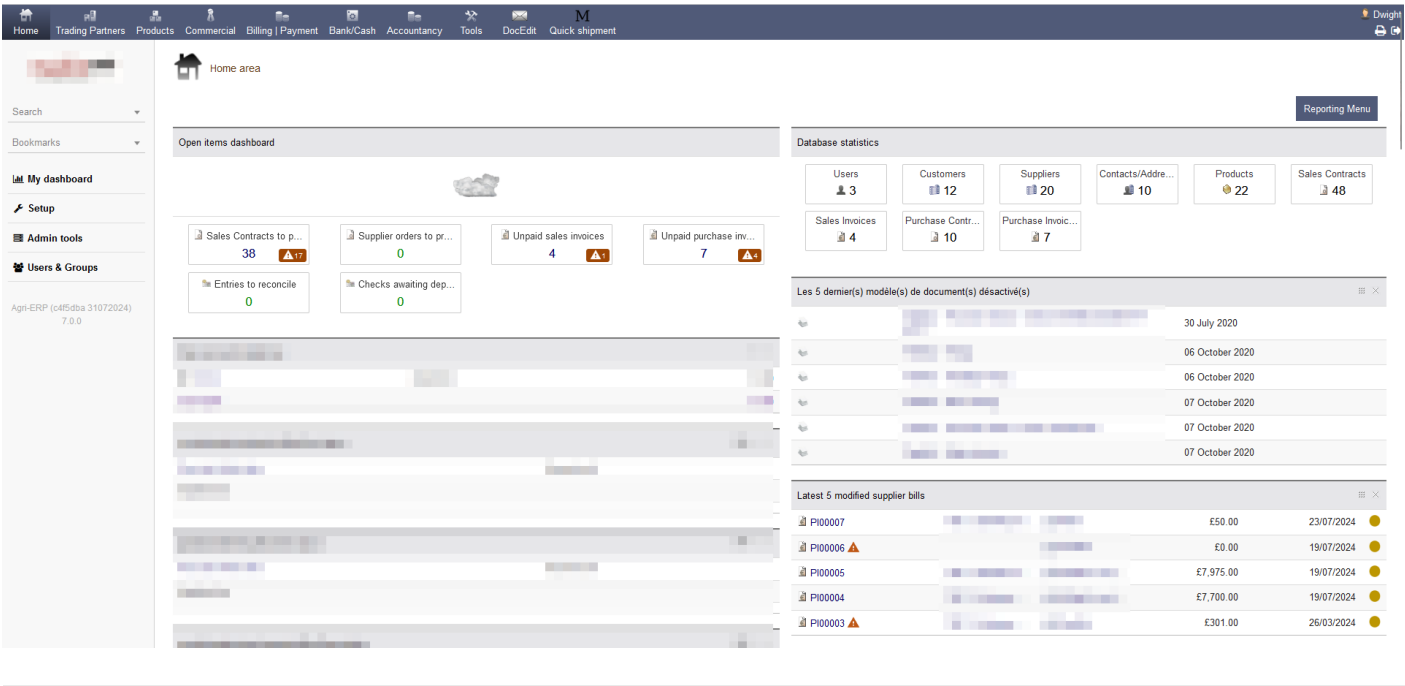
If the credentials aren't correct you will be presented with a message. You can reset your password using the link indicated



This will take you to the following page to complete whereby you will receive a new password in the email address recorded on the system



Once you have logged in you should then arrive at the dashboard of Agri-ERP



Revision #2
Created 9 August 2024 14:21:30 by RakataTech
Updated 9 August 2024 14:29:52 by RakataTech